

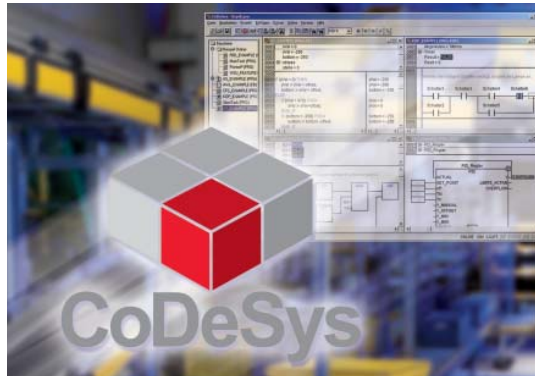


TURCK

**Industrial
Automation**

**FIELD BUS
TECHNOLOGY**

**MODULAR
I/O SYSTEMS
AND COMPACT
I/O MODULES IN
IP20 AND IP67**



Sense it! Connect it! Bus it! Solve it!

Modular I/O systems and compact I/O modules in IP20 and IP67

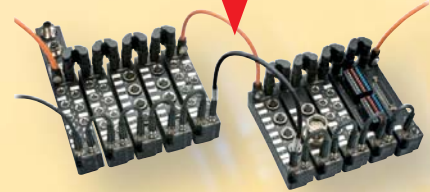
Perfect connections – no matter which fieldbus you use; TURCK provides you with a complete range of products:

- Modular and compact I/O systems in a variety of housing styles and IP-ratings
- Optimal support for planning, commissioning and service with the I/O-ASSISTANT software tool
- Decentralized intelligence with IEC 61131

BL67    page 4



piconet®    page 6



Modular	✓	✓
Compact		✓
IP20		✓
IP67	✓	✓
Functions		
Digital I/O	✓	✓
Analogue I/O	✓	✓
Technology modules	✓	✓
Fieldbus interfaces		
PROFIBUS-DP	✓	✓
DeviceNet™	✓	✓
CANopen	✓	✓
INTERBUS		✓
PROFINET IO	✓	✓
EtherNet/IP™	✓	✓
Modbus TCP	✓	✓
System support		
Motor starter		
RFID	✓	
Valve terminals	✓	✓
Zone 2		
Software		
CoDeSys programmable (see page 12)	✓	
I/O-ASSISTANT (see page 13)	✓	✓

EtherNet/IP™

PROFI
INDUSTRIAL ETHERNET
NET

Ethernet Modbus TCP

Compact I/O modules

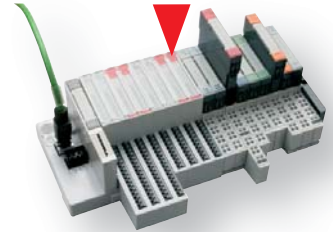
IP67 



IP20  page 8



BL20  page 10



		✓
✓	✓	
	✓	✓
✓		
✓	✓	✓
		✓
✓		✓
		✓
✓		
✓		✓
✓		✓
✓		✓
		✓
		✓
✓ (FXDP modules)		✓
		✓
✓ (FXEN modules)		✓



The BL67 I/O system – the modular I/O system in IP67 for temperature range -25...+70 °C

Gateway: The system control

- The interface to the higher level control system
- Gateways for PROFIBUS-DP, CANopen, DeviceNet™, PROFINET IO, EtherNet/IP™ and Ethernet Modbus TCP



Optional: CoDeSys-programmable according to IEC 61131

- Relieves higher-level controller and bus system
- I/O modules independent of the fieldbus
- Prefabricated function blocks e. g. for the RFID *BL ident*® system and serial interfaces

Power Feeding Module

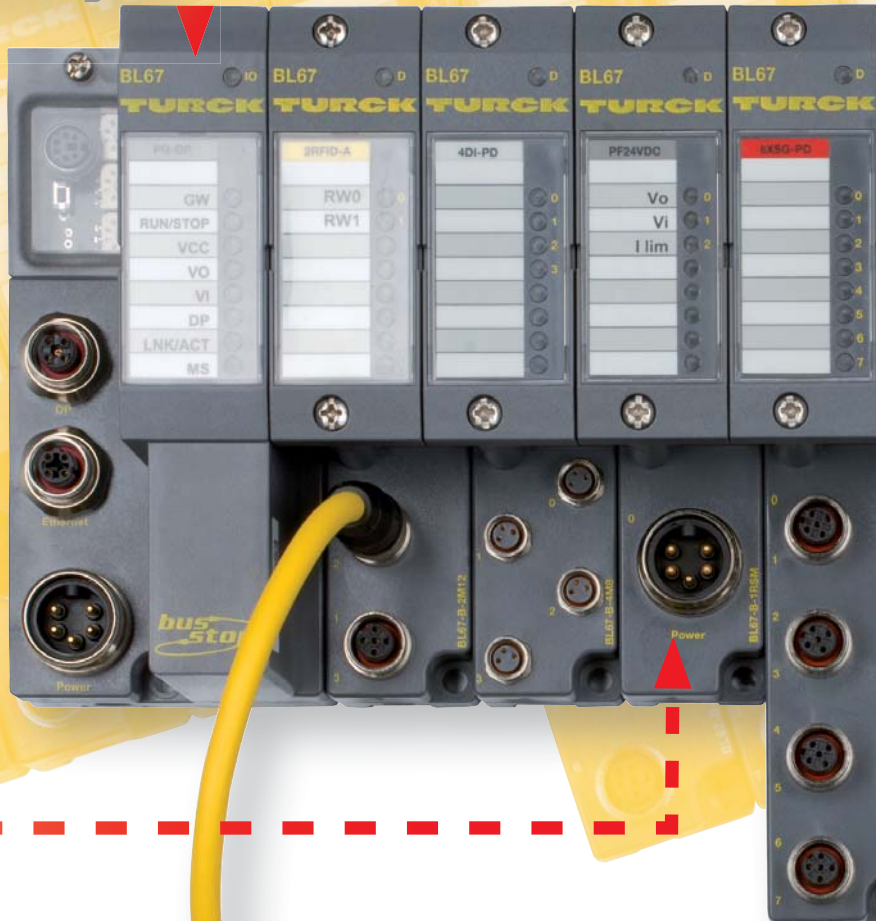
- Power supply for the field, sensors and actuators
- Enables the creation of potential groups which can be switched on or off according to the requirements of the application

Operation control with Pick-to-Light sensors

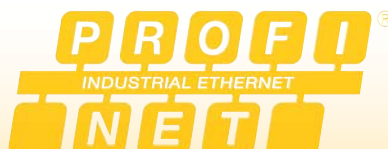
- Combined digital modules enable one input and one output per M12 connector
- Prefabricated standard M12 sensor cables

BL ident® system

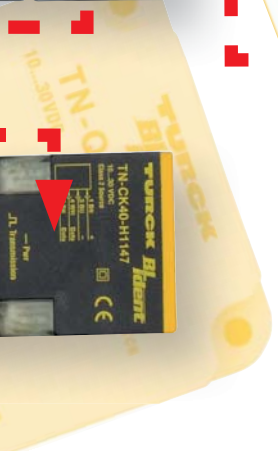
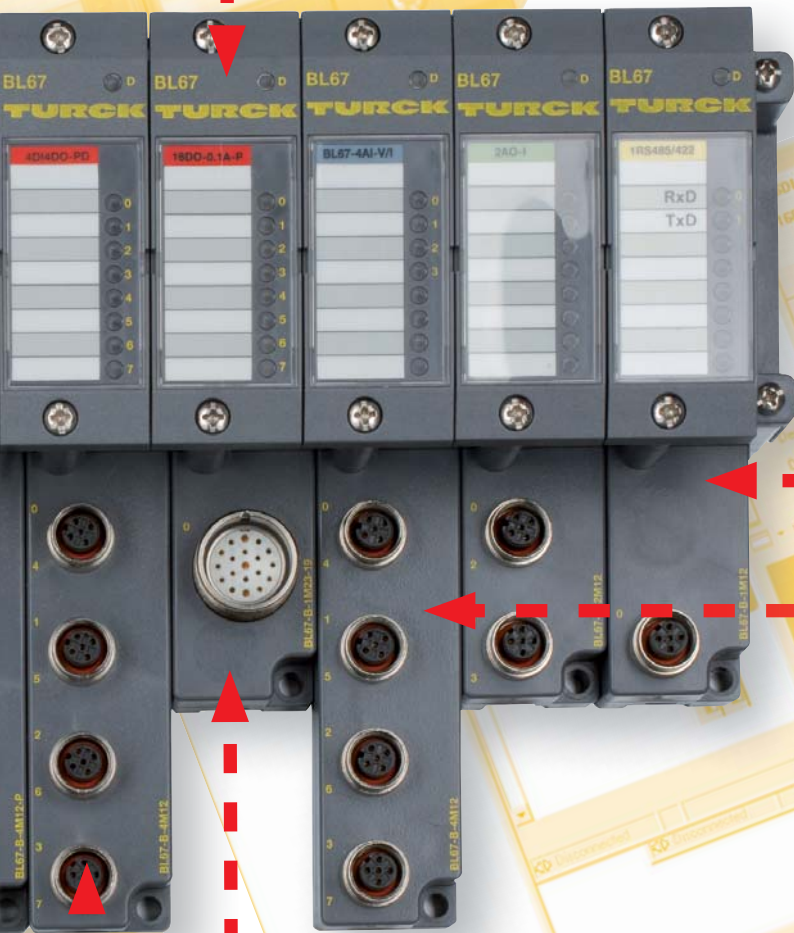
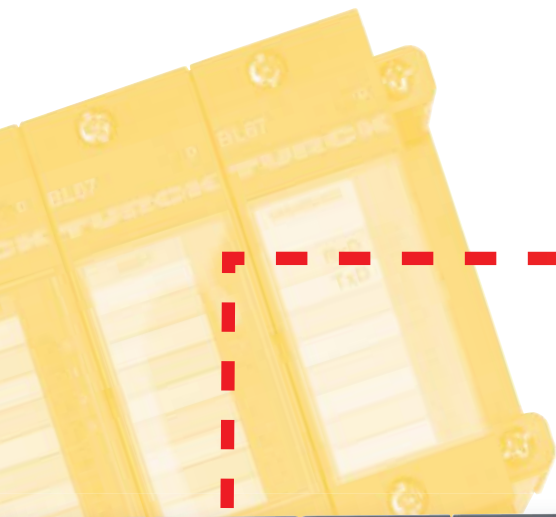
- The modular RFID system made by TURCK
- Modular extension, up to 8 channels
Temperature range of the data carriers between -40 and +210 °C



EtherNet/IP™



Modbus TCP



Elektronic modules

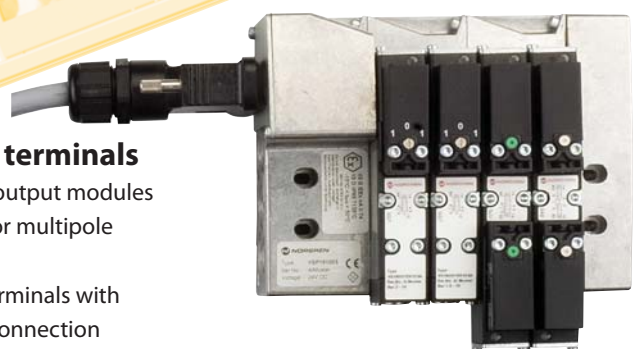
- Digital, analog, temperature, RS232, SSI, CANopen interface and more
- Independent from the applied fieldbus
- Free choice of connection technology
- Available as 2, 4, 8 or 16-channel version
- Local diagnostics and status display via LEDs
- Hot-Swapping function

Base modules

- Passive connection components for sensors and actuators
- Available as M8, M12, M23 and 7/8 connectors
- Connection of I/O modules with single, dual or multicore wiring
- Fast replacement of electronics through the use of separate connection bases

Material recognition

- Distinction of different metals or metallic compositions
- Distance independent material detection
- Inductive sensor with two analog voltage outputs



Integration of valve terminals

- 4, 8 or 16-channel digital output modules with M23 base modules for multiple valve terminals
- Up to 8 CANopen valve terminals with one CAN-valve interface connection module



I/O-ASSISTANT

- Planning, configuration, commissioning and diagnostic software
- Based on FDT/DTM technology
- Available as freeware on www.turck.com

CANopen

PROFIBUS
PROCESS FIELD BUS
BUS

DeviceNet™

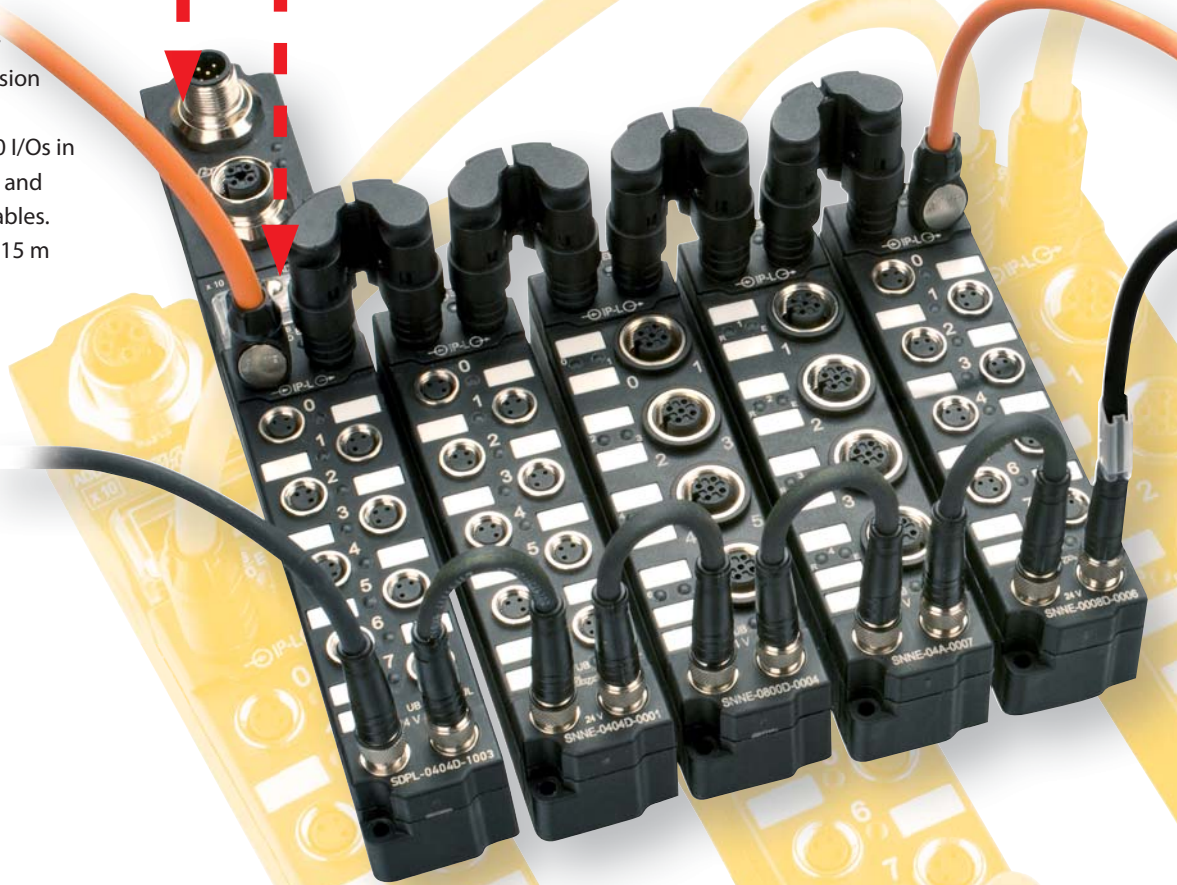
The *piconet*® I/O system – in miniature housings for highest industrial requirements

piconet® – Coupling modules

- As interface to the higher level control system
- Gateway between PROFIBUS-DP, CANopen, DeviceNet™, INTERBUS, EtherNet/IP™, Modbus TCP, PROFINET and fiber-optic cable based Sub-Bus „IP-Link“
- Coupling modules connect the higher level open fieldbus and the economical extension modules.
- Fiber-optic subnet (IP-Link) for connection of up to 120 extension modules per coupling module
- High-speed transmission, 1000 I/Os in approx. 1 ms via prefabricated and interference-free fiber-optic cables.
- Fiber-optic cable length up to 15 m



- Bus addressing switch and service interface to I/O-ASSISTANT software
- Bus LEDs
- Module/ IP-Link LEDs



Compact and robust housing

- Only 26.5 mm high, 30 mm wide and 210, 175 or 126 mm long
- Fully encapsulated IP67 housing
- Suited for direct use on the machine
- Ideally suited for special or serial machine engineering as well as for various field applications

piconet®-Stand-alone module

- Stand-alone modules connect the integrated I/Os directly with the open fieldbus, e.g. PROFIBUS-DP, CANopen, DeviceNet™, INTERBUS, Modbus TCP, EtherNet/IP and PROFINET

A secure connection

- Prefabricated bus, fiber optic, power and I/O cables
- Field-wireable connectors
- Additional networking components such as T-pieces, terminating resistors etc.



piconet® – Extension modules

- Flexible and tested I/O connection technology in M8 x 1, M12 x 1 and M23 x 1
- Extension modules independent of the higher level fieldbus system

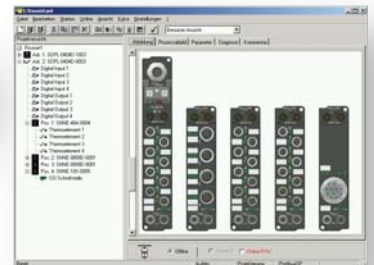
piconet® – Bridges for fibre optics and power cables

- Compact mounting
- Reduced space requirements
- Easy installation
- IP67

Easy planning and configuration with the I/O-ASSISTANT

Configuration software for

- Project planning
- Configuration
- Parameterization



Description

The configuration software I/O-ASSISTANT supports you in planning and implementation of an I/O system.

Whether in the online or offline mode, the I/O-ASSISTANT simplifies module configuration and parameterization.

The software is also extremely helpful in system set-up and testing.

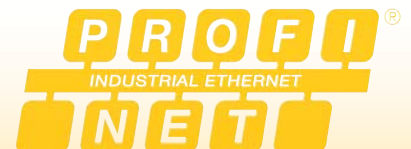


Power LEDs
High current module Σ 12 A with 2 x M8 connectors



Modbus TCP

EtherNet/IP™



Certified! No.099

Compact fieldbus I/O modules in IP67 and IP20

Compact fieldbus modules

These rugged modules are ideal for use in harsh industrial environments (both electrical and mechanical).

No matter if PROFIBUS-DP, DeviceNet™, Modbus TCP, EtherNet/IP™ or PROFINET protocols are required, all compact fieldbus I/O modules are designed with the same mechanical concept and have the following characteristics:

- Fibre-glass reinforced plastic housing
- Fully encapsulated module electronics
- Standard connection technology
- Metal round connector
- Vibration and shock tested
- Degree of protection IP67



FXDP – Configurable PROFIBUS-DP modules

- Freely configurable I/Os
- Channel-specific diagnostics
- Diagnostics according to PROFIBUS standard
- Diagnostics can be mapped to user data area
- Up to 16 digital channels



FGDP – PROFIBUS-DP-Modules with galvanic isolation

- Channel-specific diagnostics
- Diagnostics according to PROFIBUS standard
- Diagnostics can be mapped to user data area
- Up to 16 digital channels
- Galvanic isolation of operating and load voltage



FLDP – PROFIBUS-DP modules

- Module-specific diagnostics
- Up to 32 digital channels





FDNL – DeviceNet™ modules

- Channel-specific diagnostics (LX series) or module-specific diagnostics (SE series)
- Up to 16 digital channels
- Power supply via DeviceNet™



FDNP – DeviceNet™ modules

- Channel-specific diagnostics (LX series) or module-specific diagnostics (SE series)
- Up to 16 digital channels
- Separate power supply for the outputs



FDN/FDP – IP20 modules

- Extremely compact for mounting in tight spaces
- PROFIBUS-DP or DeviceNet™
- Up to 16 digital channels

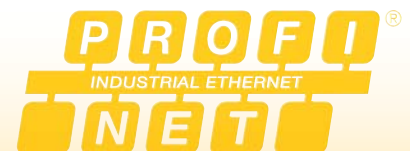


FXEN – Configurable Ethernet modules

- Integrated Ethernet switch
- Freely configurable I/Os
- Channel-specific diagnostics
- Up to 16 digital channels

Accessories

- Cordsets – premoulded cables for bus, power supply and I/Os
- T and Y pieces Terminating resistors
- Flange connectors
- Feed-through receptacles
- Passive junction boxes



The BL20 I/O system – The integrator for fieldbus, ident system, motor starter

Gateway – The system control

- The interface to the higher level control system
- Gateways e.g. for PROFIBUS-DP, CAN-open, DeviceNet™, Ethernet/IP™ and Modbus TCP – also available as economy version



Optional – CoDeSys programmable according to IEC 61131

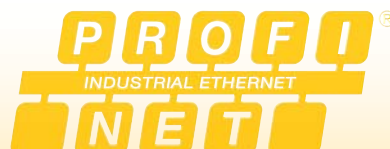
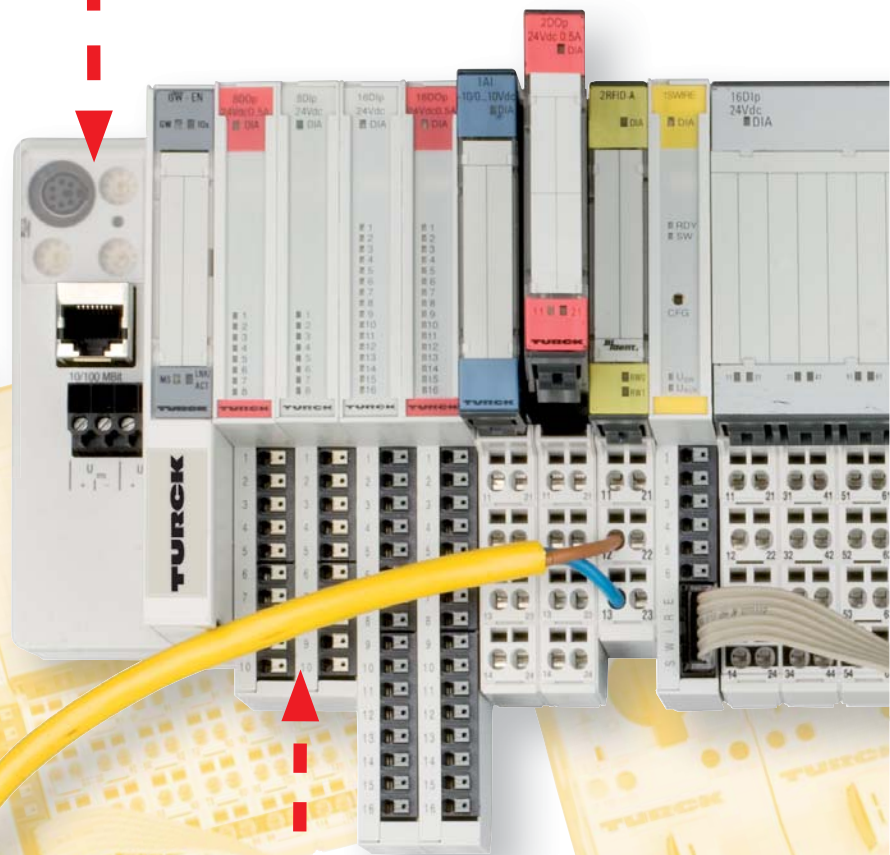
- Relieves higher-level controller and bus system
- I/O modules independent of the fieldbus
- Prefabricated function blocks e.g. for the RFID system *BL ident*®

Economy I/O – extremely compact and competitively priced

- 8 or 16 I/Os in only 12,5 mm
- Integrated connection level with „Push-in“ tension spring technology, no tools necessary
- Economy I/Os combinable with standard I/O slices

BL ident®, the RFID system

- Up to 8 RFID channels
- Pre-processing in programmable gateway relieves the higher-level controller.



Modbus TCP

Standard I/O – multifunctional and system friendly

- Exchangeable electronic modules – disconnection of field wiring is not necessary
- Up to two neighbouring modules are exchangeable during normal system operation without disrupting system functions
- Single or block modules with screw or cage clamp terminals



I/O-ASSISTANT

- Planning, configuration, commissioning and diagnostic software
- Based on FDT/DTM technology
- Available as freeware on www.turck.com



Motor starter

- (Direct and reversing starters up to 15 kW acc. to IEC/EN 60947-4-1)
- 3 connection-slices per gateway
 - Up to 16 devices per slice
 - Simple wiring

The motor starters consequently build upon the advantages of the BL20 system:

- Modular
- Flexible
- Simple mounting and operation
- Cost-efficient

CANopen

PROFIBUS
PROCESS FIELD BUS
BUS

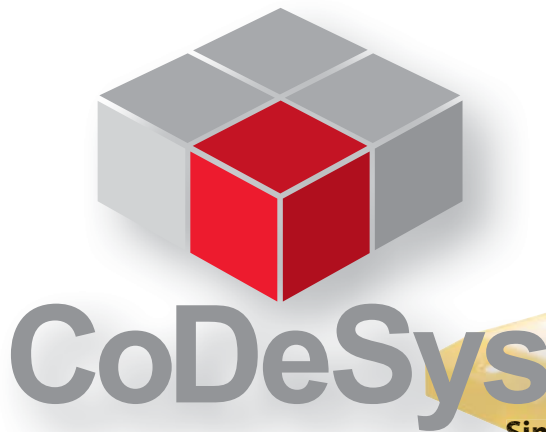
DeviceNet™

Easy programming with CoDeSys according to IEC 61131-3

The programmable gateways become decentral control units with the CoDeSys programming software.

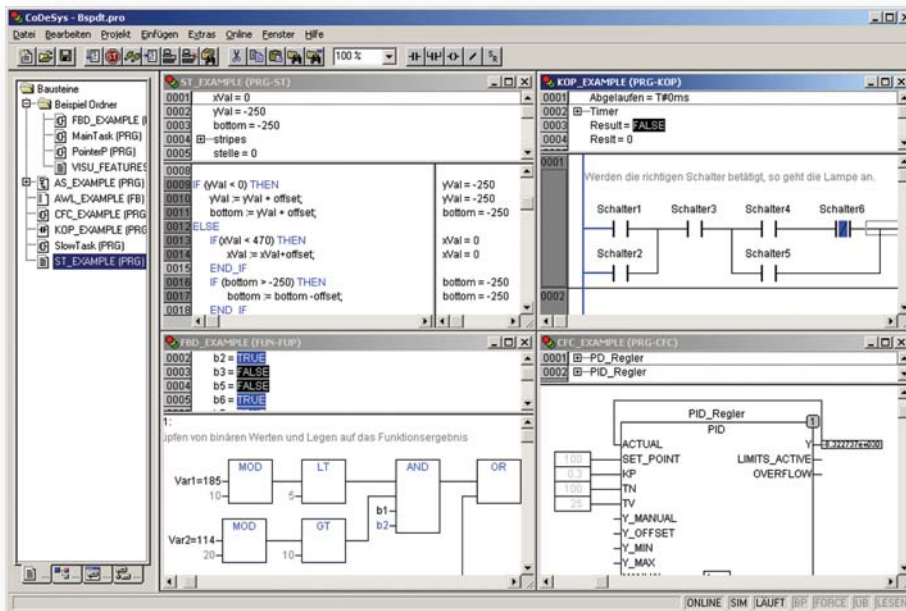
The graphical programming interface supports all IEC-61131-3 programming languages

- Instruction List (IL)
- Sequential Function Chart (AS)
- Function Block Diagramm (FBD)
- Structured Text (ST)
- Ladder Diagram (LD)



Simple connection

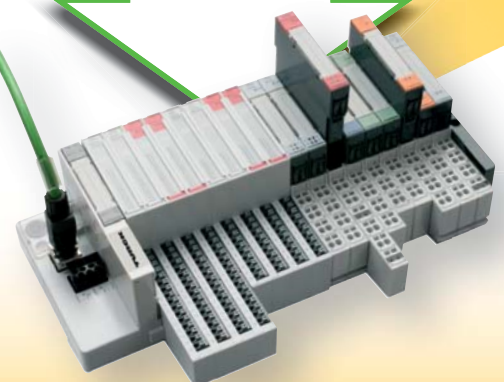
- Quick and simple connection of heterogeneous systems
- Standard transmission protocols such as e.g. TCP/IP and UDP/IP
- Network-global variables
- Bidirectional data exchange between CoDeSys systems
- Additional programming is not required



Project planning and configuration

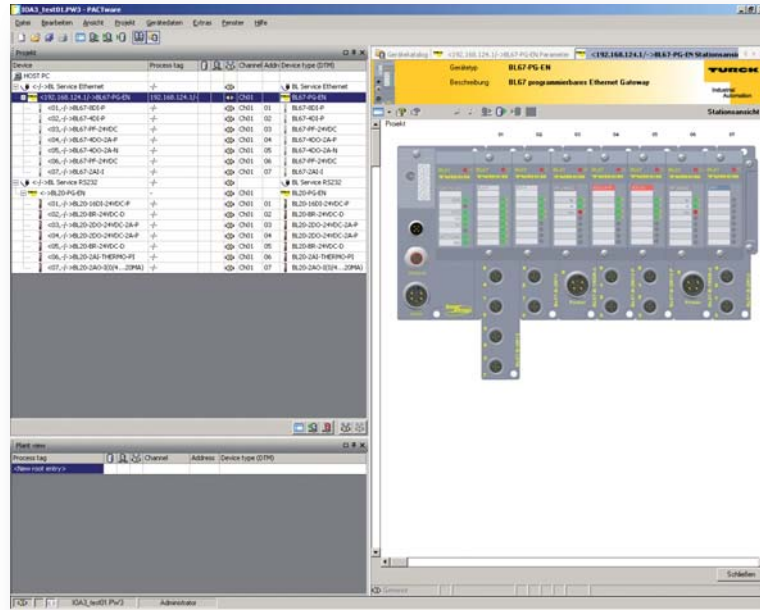
- Target-Support-Package as driver for the target system
- Drag and Drop function for the hardware configuration
- Standard editor for I/O configuration and parameterization
- Symbolic display of variables for I/O addresses
- Numerous diagnostics and commissioning functions
- Function blocks e. g. for the RFID system *BL ident®*

Data exchange via Ethernet



Easy parameterization with I/O-ASSISTANT on the basis of FDT/DTM

- System configuration, parameterization and diagnostics with a graphical interface based on FDT/DTM technology
- DTMs can be integrated in any FDT frame application for configuration, commissioning and maintenance
- I/O-ASSISTANT and DTMs are available free of charge on www.turck.com



Description

The configuration software I/O-ASSISTANT supports you in planning and implementation of an I/O system. No matter if you are online or offline, the I/O-ASSISTANT simplifies the configuration as well as the configuration and parameterization of the modules.

This software is also extremely helpful in system set-up and testing.

Functions

- Supporting software tool
- Selection of the required modules
- Offline planning and configuration of BL67 and BL20 modules
- Configuration, parameterization and commissioning of individual modules
- Reading and setting of process data
- Commissioning help for testing the wiring and sensors without PLC
- Realistic display of configured BL67 components
- Automatic documentation of configured BL67 and BL20 systems

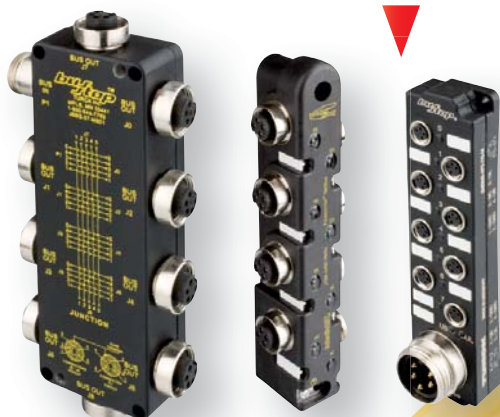


Components for fieldbus and power supply infrastructure

Premoulded and tested connector systems significantly reduce the error rate of fieldbus installations and speed up system set-up. The components are simply plugged together – „Plug and Play“ is the motto!

Passive junction boxes in IP67 for

- Fieldbus
- Power supply



Active junction boxes in IP67

- Repeater
- Spanner
- Ethernet switches



Fieldbus accessories

- T-pieces
- Y-pieces
- Flange connectors
- Feed-through receptacles
- Terminating resistors
- Field-wireable connectors



Fieldbus cables

- PROFIBUS-DP
- DeviceNet™
- Ethernet/Industrial Ethernet



EtherNet/IP™

PROFI
INDUSTRIAL ETHERNET
NET

DeviceNet™

Power supply

- Premoulded cables
- Field-wireable connectors
- T-pieces
- Feed-through receptacles
- Flange connectors



JIT – Delivery program

Ideally the length of the cord set is adjusted according to the requirements of the plant. For this reason TURCK now offers a Just-In-Time-delivery service (JIT) for premoulded cables.

The new JIT-5D-Program for perfect connections:

- Just-In-Time delivery within 5 days only*
- Free choice of cable length
- Premoulded fieldbus and power cables
- High flexibility with respect to planning and mounting of your application
- High cost savings

Work-day

1.

Ordering until 12 pm

Production

JUST IN TIME!

Arrival at the customer

5. Work-day

* the 5 days apply only for deliveries within the European Union (EU)



Sensor cables

- M8
- M12
- M23
- valve connector

Delivery 3 workdays after ordering

Power supplies in IP67



CANopen

PROFIBUS
PROCESS FIELD BUS

Ethernet Modbus TCP

TURCK WORLD-WIDE HEADQUARTERS

GERMANY

Hans Turck GmbH & Co. KG
Witzlebenstraße 7
45472 Mülheim an der Ruhr
P. O. Box 45466 Mülheim an der Ruhr
Tel. +49 (0) 208 4952-0
Fax +49 (0) 208 4952-264
E-Mail more@turck.com

AUSTRALIA

TURCK Australia Pty. Ltd.
unit 5, 6-7 Gilda Court Mulgrave
Victoria 3170
Tel. +61 395609066
Fax +61 395601620
E-Mail australia@turck.com

Austria

TURCK GmbH
Josef-Moser-Gasse 1
1170 Wien
Tel. +43 14 86 15 87 0
Fax +43 14 86 15 87 23
E-Mail austria@turck.com

BAHRAIN

TURCK Middle East S.P.C.
Flat# 23, bldg# 2748
Road# 3649, Block# 436
Seef Area
Manama - Kingdom of Bahrain
Tel. +973 13 638288
Fax +973 13 648288
E-Mail turckmiddleeast@turck.com

BELGIUM

Multiprox N. V.
P. B. 71
Lion d'Orweg 12
9300 Aalst
Tel. +32 53 76 65 66
Fax +32 53 78 39 77
E-Mail mail@multiprox.be

CZECH REPUBLIC

TURCK s.r.o.
Hradecká 1151
500 03 Hradec Králové 3
Tel. +420 495 518 766
Fax +420 495 518 767
E-Mail czechrepublic@turck.com

PR OF CHINA

TURCK (Tianjin) Sensor Co. Ltd.
18,4th Xinghuazhi Road
Xiqing Economic
Development Area
300381 Tianjin
Tel. +86 22 83988-188
83988-199
Fax +86 22 83988-111
E-Mail china@turck.com

FRANCE

TURCK BANNER S.A.S
3, Rue de Courtalin
Magny-Le-Hongre
77703 Marne-La-Vallee Cedex
Tel. +33 1 60 43-60 70
Fax +33 1 60 43-10 18
E-Mail info@turckbanner.fr

GREAT BRITAIN

TURCK BANNER LIMITED
Blenheim House
Hurricane Way
Wickford, Essex SS11 8YT
Tel. +44 1268 578888
Fax +44 1268 763648
E-Mail info@turckbanner.co.uk

HUNGARY

TURCK Hungary kft.
Könyves Kalman Krt.76
1087 Budapest
Tel. +36 14 77 07 40
Fax +36 14 77 07 41
E-Mail hungary@turck.com

INDIA

TURCK India Automation Pvt Ltd.
603/604, 6th Floor, A-wing
ICC Trade Towers
Senapati Bapat Road
Pune - 411016,
Maharashtra - India
Tel. +91 20 25630039
25630040
Fax +91 2 25630040
E-Mail india@turck.com

ITALY

TURCK BANNER S. R. L.
Via S.Domenico, 5
20010 Bareggio (MI)
Tel. +39 02 90 36 42 91
Fax +39 02 90 36 48 38
E-Mail info@turckbanner.it

JAPAN

TURCK Japan Corporation
#202 MBD Bldg. 2F, 3-3-23
Minami-Aoyama,
Minato-ku, 107-0062, Tokyo
Japan
Tel. +81 3 5772 2820
Fax +81 3 3408 2571
E-Mail japan@turck.com

KOREA

Turck Korea Co. Ltd.
Korea Republik (Süd)
Room No. 412, Gyeonggi
Technopark 1271-11,
Sa 1-Dong, Sangnok-Gu, Ansan
ROK426-901 Gyeonggi-Do
Tel. +82 31 500 4555
Fax +82 31 500 4558
E-Mail korea@turck.com

MEXICO

TURCK Mexico S. DE R.L. DE C.V.
Carr. Saltillo-Zacatecas km 4.5 s/n
Parque Industrial "La Angostura"
Saltillo, COAH. 25070
Tel. +52 844 411 6650/46
553 7300
Fax +52 844 482 6926
E-Mail mexico@turck.com

THE NETHERLANDS

TURCK B. V.
Postbus 297
8000 AG Zwolle
Tel. +31 38 4 22 77 50
Fax +31 38 4 22 74 51
E-Mail netherlands@turck.com

POLAND

TURCK sp.z o.o
ul. Wroclawska 115
45-836 Opole
Tel. +48 77 443 4800
Fax +48 77 443 4801
E-Mail poland@turck.com

ROMANIA

TURCK Automation Romania SRL
Str. Siriului nr. 6-8, Sector 1
014354 Bucharest
Tel. +40 21 230 02 79
Fax +40 21 231 40 87
E-Mail romania@turck.com

RUSSIA

TURCK Rus O.O.O.
Altufyevskoe shosse, 1/7
127106 Moskau
Tel. +7 495 234 2661
Fax +7 495 234 2665
E-Mail russia@turck.com

SINGAPORE

TURCK Singapore Pte. Ltd.
25 International Business Park
#03-22/23 German Centre
609916 Singapore
Tel. +65 6562 8716
Fax +65 6562 8719
E-Mail singapore@turck.com

TURKEY

Turck Consulting Office
Inonu mah. Kayisdagi c.
Yesil Konak Evleri No:
178, A Blok D:4
34755 Kadikoy/Istanbul
Tel: +90 0 216 572 21 77
Fax: +90 0 216 57 221 23
E-Mail:turkey@turck.com

USA

TURCK Inc.
3000 Campus Drive
Minneapolis, MN 55441-2656
Tel. +1 763 553 9224
553 7300
Fax +1 763 553 0708
E-Mail usa@turck.com

TURCK

Industrial Automation



D301140 2010/01



Subject to change without notice

...and more than 60 representatives and agencies world-wide.